

Enzalutamide Treatment in Metastatic Castration-resistant Prostate Cancer: Before and after Docetaxel

Irem Bilgetekin¹, Fatma Bugdayci Basal¹, Havva Yesil Cinkir², Ece Esin¹, Berna Oksuzoglu¹ and Umut Demirci¹

¹Department of Medical Oncology, Dr. Abdurrahman Yurtaslan Ankara Oncology Training and Research Hospital, Ankara, Turkey

²Department of Medical Oncology, Gaziantep University Medical Faculty Hospital, Gaziantep, Turkey

ABSTRACT

Objective: To evaluate the efficacy and safety of enzalutamide in metastatic castration-resistant prostate cancer (mCRPC) in docetaxel-naïve and docetaxel-pretreated patients.

Study Design: Observational study.

Place and Duration of Study: HSU Dr. Abdurrahman Yurtaslan Oncology Training and Research Hospital, Department of Medical Oncology, Ankara, Turkey, from March 2017 to July 2019.

Methodology: A total of 67 patients with mCRPC were retrospectively evaluated. Castration-naïve patients and non-metastatic patients were excluded from the study. Comorbid diseases, ECOG performance status, PSA response, and the radiological response of the patients were recorded. Kaplan-Meier method was used for survival analysis, and a Cox regression model was formed.

Results: The overall survival (OS) was significantly longer in patients with eastern cooperative oncology group performance status (ECOG PS) 0 (26.0 vs. 14.0 months, $p=0.031$), PSA response (26.0 vs. 7.0 months, $p=0.002$), radiological response (26.0 vs. 10.0 months, $p=0.006$) and duration of enzalutamide ≥ 9 months (26.0 vs. 7.0 months, $p<0.001$) compared to ECOG PS 1. According to Cox regression analysis, patients with PSA response had 0.35 fold (CI.95% 0.13-0.94) reduced the risk of death and 0.36-fold (CI.95% 0.16-0.85) reduced the risk of progression compared to those without PSA response. Moreover, longer enzalutamide treatment (≥ 9 months) was noted to decrease the risk of death.

Conclusion: PSA response, radiological response and duration of enzalutamide treatment may predict the improvement of survival in patients with mCRPC treated with enzalutamide.

Key Words: Enzalutamide, Docetaxel, Castration-resistant prostate cancer, Overall survival, Progression-free survival.

How to cite this article: Bilgetekin I, Basal FB, Cinkir HY, Esin E, Oksuzoglu B, Demirci U. Enzalutamide Treatment in Metastatic Castration-resistant Prostate Cancer: Before and after Docetaxel. *J Coll Physicians Surg Pak* 2020; **30(08)**:815-821.

INTRODUCTION

Prostate cancer (PC) is the most common male cancer world-wide, accounting for 1–2% of deaths in men.¹ Prostate cancer is approximately 5% metastatic at the time of diagnosis.² Considering the known effects of androgens on the progression of PC, androgen deprivation therapy (ADT) remains the gold standard of treatment for PC.^{3,4} However, castration-resistant prostate cancer (CRPC) recurs within an average of 14–20 months after ADT through castration.⁵

Castration-resistant means the progression of disease despite a serum testosterone level of <50 ng/dl (<1.7 nmol/l).⁶ Castration resistance in prostate cancer increases the risk of metastasis and one-third of patients become metastatic-disease within 2 years.⁷

In metastatic CRPC, there have been significant improvements in treatment with the use of hormonal treatment (enzalutamide or abiraterone acetate with prednisone) agents before cytotoxic chemotherapy.⁸ Until date, various treatment options have been approved for metastatic CRPC (mCRPC), including docetaxel, cabazitaxel, abiraterone acetate, enzalutamide, sipuleucel-T, and radium-223,⁹ after the use of docetaxel cabazitaxel provided survival advantage.¹⁰

Preclinical studies have evidenced that androgen receptor (AR) overexpression resists ADT in the PC cell line, and intratumoral androgen levels were often noted to be high in patients with mCRPC.^{11,12} With advancements in the understanding of CRPC biology, several targeted treatment strategies have been developed to overcome AR signalling.^{13,14}

Correspondence to: Dr. Irem Bilgetekin, Department of Medical Oncology, Dr. Abdurrahman Yurtaslan Ankara Oncology Training and Research Hospital, Ankara, Turkey
E-mail: irembilgetekin@gmail.com

Received: July 03, 2020; Revised: July 05, 2020;

Accepted: July 09, 2020

DOI: <https://doi.org/10.29271/jcpsp.2020.08.815>

Table I: Summary of patients' characteristics based on enzalutamide treatment order.

		Enzalutamide treatment		Total	p
		Before docetaxel	After docetaxel		
Age, mean \pm sd		77.7 \pm 5.38	68.6 \pm 6.83	72.4 \pm 7.68	<0.001
Comorbidities, n (%)		18 (64.3%)	17 (43.6%)	35 (52.2%)	0.094
ECOG PS, n (%)					
	0	14 (50.0%)	33 (84.6%)	47 (70.1%)	0.002
	≥ 1	14 (50.0%)	6 (15.4%)	20 (29.9%)	
Gleason score, n (%)					
	Grade <8	10 (35.7%)	7 (17.9%)	17 (17.9%)	0.099
	Grade ≥ 8	18 (64.3%)	32 (82.1%)	50 (74.6%)	
Duration of enzalutamide treatment, median (IQR)		8.0 (6.0–15.5)	10.0 (6.5–15.0)	8.5 (6.0–15.0)	0.958
PSA levels, n (%)					
	Before enzalutamide (IQR)	74.0 (36.5–232)	43.0 (28.0–117.0)	68.5 (28.7–138.0)	0.388
	After enzalutamide (IQR)	21.0 (4.5–98.0)	16.8 (7.0–48.0)	18.0 (6.0–52.0)	
	p (within groups)	0.016	0.001	<0.001	
PSA response, n (%)					
	Absent	6 (21.4%)	6 (15.4%)	12 (17.9%)	0.525
	Present	22 (78.6%)	33 (84.6%)	55 (82.1%)	
Radiological response, n (%)					
	Partial	4 (14.3%)	6 (15.4%)	10 (14.9%)	0.844
	Stable	17 (60.7%)	21 (53.8%)	38 (56.7%)	
	Progression	7 (25.0%)	12 (30.8%)	19 (28.4%)	
Radiological response, n (%)					
	Absent	7 (25.0%)	12 (30.8%)	19 (28.4%)	0.605
	Present	21 (75.0%)	27 (69.2%)	48 (71.6%)	
Metastasis, n (%)					
	Only Bone	16 (57.1%)	24 (61.5%)	40 (59.7%)	0.043
	Bone + LAP	7 (25.0%)	2 (5.1%)	9 (13.4%)	
	Bone + Visceral	5 (17.9%)	13 (33.3%)	18 (26.9%)	
Side Effect, n (%)		16 (57.1%)	16 (41.0%)	32 (47.8%)	0.193
	Weight Loss	5 (17.9%)	6 (15.4%)	11 (16.4%)	1.000
	Fatigue	12 (42.9%)	16 (41.0%)	28 (41.8%)	1.000
	Neuropathy	4 (14.3%)	5 (12.8%)	9 (13.4%)	1.000
	Amnesia	3 (10.7%)	1 (2.6%)	4 (6.0%)	0.301
	Diarrhea	3 (10.7%)	0 (0.0%)	3 (4.5%)	0.068
	Arthralgia	12 (42.9%)	9 (23.1%)	21 (31.3%)	0.085
	Headache	5 (17.9%)	4 (10.3%)	9 (13.4%)	0.474
	Cerebrovascular event	1 (3.56%)	1 (2.6%)	2 (3.0%)	1.000
Progression, n (%)					
	Absent	11 (39.3%)	20 (51.3%)	31 (46.3%)	0.331
	Present	17 (60.7%)	19 (48.7%)	36 (53.7%)	
Status, n (%)					
	Alive	17 (60.7%)	27 (69.2%)	44 (65.7%)	0.469
	Exitus	11 (39.3%)	12 (30.8%)	23 (34.3%)	

ECOG PS: Eastern cooperative oncology group performance status; IQR: Interquartile range; LAP: Lymphadenopathy; SD: Standard deviation.

Abiraterone and enzalutamide are hormonal treatment agents that improve survival. While abiraterone acts on survival by androgen synthesis blockade, enzalutamide acts

by blocking androgen receptor.¹⁵ Enzalutamide belongs to the class of AR inhibitors that act by first binding directly to the AR and subsequently blocking both AR-mediated DNA

binding and AR nuclear translocation.^{16,17} The effect of enzalutamide on overall survival (OS) has been demonstrated in the PREVAIL and AFFIRM studies, which are international, placebo-controlled, phase 3 studies involving patients with mCRPC, both docetaxel-naïve and docetaxel-pretreated^{18,19}

In Turkey, the use of enzalutamide as the first-line treatment is limited only to patients who cannot tolerate docetaxel. Besides, it is most commonly used after docetaxel therapy in routine practice. Hence, this study aimed to evaluate the efficacy and safety of enzalutamide in docetaxel-naïve and docetaxel-pretreated patients. To the authors' knowledge, this is the first study to analyse the real-world data from Turkey regarding mCRPC.

METHODOLOGY

In this retrospective observational study, patients who had radiological evidence for metastasis and were followed up with histologically confirmed mCRPC from the medical file databases of the two oncology centres were identified. Among these patients, those who had received enzalutamide (as first-line treatment or after docetaxel) for mCRPC between March 2017 and July 2019 were enrolled. The efficacy of enzalutamide treatment in mCRPC, before and after docetaxel, was investigated in the present study.

Patients were included if they had histologically verified adenocarcinoma of the prostate with described metastases, as well as PSA and radiological progressions (or both) in bone or soft tissue metastases, and were considering LHRH analogue therapy or orchiectomy, with a serum testosterone level of 1.73 nmol/L (50 ng/dL) or less. All patients with mCRPC, who received first-line enzalutamide or began enzalutamide after docetaxel therapy, were included in the study. Castration-naïve patients and non-metastatic patients were excluded from the study.

The following parameters were evaluated within the scope of the study: comorbid diseases, ECOG performance status, Gleason score, PSA response, clinical response, radiological response, enzalutamide therapy characteristics (first-line, after docetaxel, other treatments), side effects and toxicity information, metastatic sites, progression status, and exitus dates.

Radiological response was evaluated by thorax, abdomen and pelvis tomography, and include scintigraphy (bone scan) for evaluation of bone metastases.

Enzalutamide was prescribed at a dose of 160 mg/day and was administered until disease progression, death, or development of unacceptable toxicity. Patients who received first line enzalutamide treatment were designated as the 'before docetaxel' (BD) group. Patients who received enzalutamide after docetaxel were designated as the 'after docetaxel' (AD) group. All side effects, including possible drug-related

fatigue symptoms, as well as all neurological findings, including seizures, were recorded in patients' tolerance and reliability analyses.

All analyses were performed using SPSS version # 21 (SPSS Inc., Chicago, IL, USA). Repeated measurements of PSA values were compared between time-points by using Wilcoxon T test. Intergroup comparisons of PSA value differences were performed using the Mann-Whitney U-test. Categorical variables were evaluated using the Chi-square tests or Fisher's Exact tests.

The presence of 'PSA response' was defined as more than 50% reduction from baseline. The radiological response was considered complete or partial in the presence of regression or stable disease.

Survival analyses were performed using Kaplan-Meier method. Intergroup survival comparisons were performed using the Log-Rank test. Notably, the time from the initiation of enzalutamide to progression was defined as progression-free survival (PFS); whereas, the time from the initiation of enzalutamide until death or the last control date was considered as OS. Significant factors of death and progression were determined using the Cox regression analysis forward selection (conditional) method. Two-tailed *p* values of less than 0.05 were considered statistically significant.

RESULTS

The number of patients receiving enzalutamide before docetaxel was 28 (41.8%), after docetaxel was 39 (58.2%). Median duration of enzalutamide treatment was 8.5 months. The mean age of study patients was 72.40 ± 7.68 years (range: 53–85 years), and 35 patients (52.2%) had comorbidities. The median PSA value at the time of diagnosis was 52 ng/ml (IQR: 13–171 ng/ml). The BD group was observed to be significantly older (*p*<0.001) and worse performance score (*p*=0.002). PSA levels were noted to decrease significantly in all groups (BD: *p*=0.016, AD: *p*=0.001). The summary of patients' characteristics related to enzalutamide treatment initiation is provided in Table I.

OS was significantly higher in patients with PSA response (26.0 vs. 7.0 months, *p*=0.002, Figure 1). OS was significantly higher in patients with radiological response (26.0 vs. 10.0 months, *p*=0.006). Data regarding intergroup OS and PFS comparisons with the Log-Rank test are presented in Table II.

The presence of PSA response and longer duration of enzalutamide treatment (≥9 months) were determined to be good prognostic factors for OS upon Cox regression analysis. Patients with PSA response had 0.35-fold lower likelihood of death [CI. 95% (0.13–0.94)]; whereas, longer enzalutamide treatment duration (≥9 months) 0.72-fold decreased the risk of death [CI.95% (0.63–0.83)].

Table II: OS and PFS with Kaplan-Meier method and comparisons of groups with Log-Rank test.

		Median OS (95% CI)	p	Median PFS (95% CI)	p
All patients		26.0 (11.8 – 40.2)	N/A	13.0	N/A
Age					
	≤75	26.0 (14.5 – 37.4)	0.373	17.0 (10.4 – 23.6)	0.438
	>75	NR		13.0 (6.7 – 19.3)	
Comorbidities					
	Absent	NR	0.224	25.0 (13.5 – 36.5)	0.044
	Present	19.0 (10.1-27.9)		9.0 (5.7 – 12.2)	
ECOG PS					
	0	26.0 (15.9 – 36.1)	0.031	15.0 (8.5 – 21.5)	0.436
	≥1	14.0 (5.3 – 22.7)		13.0 (8.2 – 17.8)	
Gleason score					
	Grade <8	NR	0.168	14.0 (9.5 – 18.5)	0.178
	Grade ≥8	19.0 (12.3 – 25.7)		13.0 (4.8 – 21.2)	
Enzalutamide					
	Before docetaxel	14.0 (N/A)	0.416	13.0 (6.6 – 19.4)	0.851
	After docetaxel	26.0 (15.9 – 36.1)		14.0 (2.4 – 25.5)	
PSA response					
	Absent	7.0 (5.0 – 8.9)	0.002	6.0 (4.2 – 7.8)	0.002
	Present	26.0 (13.9 – 38.0)		15.0 (10.8 – 19.2)	
Radiological response					
	Absent	10.0 (1.8 – 18.2)	0.006	7.0 (4.9 – 9.0)	0.008
	Present	26.0 (15.8 – 36.2)		17.0 (8.8 – 25.2)	
Duration of enzalutamide					
	<9 months	7.0 (4.2 – 9.8)	<0.001	N/A	N/A
	≥9 months	26.0 (N/A)		N/A	
Metastasis					
	Only Bone	26.0 (10.3 – 41.7)	0.659	15.0 (6.7 – 23.2)	0.612
	Bone + LAP	14.0 (11.9 – 16.1)		14.0 (11.9 – 16.1)	
	Bone + Visceral	NR		8.0 (4.4 – 11.6)	
Side Effect					
	Absent	19.0 (N/A)	0.405	14.0 (10.2 – 17.8)	0.987
	Present	26.0 (7.9 – 44.1)		8.0 (0.2 – 15.8)	

OS: Overall survival; PFS: Progression-free survival; ECOG PS: Eastern cooperative oncology group performance status; LAP: Lymphadenopathy.

Upon intergroup comparisons of PFS by using the Log-Rank test, it was observed that PFS was significantly longer in those with PSA response (15.0 vs. 6.0 months, $p=0.002$, Figure 2), absence of comorbidities (25.0 vs. 9.0 months, $p=0.044$) and radiological response (17.0 vs. 7.0 months, $p=0.008$, Table II).

It was determined that the presence of PSA response and radiological response to be excellent prognostic factors for PFS on Cox regression analysis. Patients with PSA response had 0.36-fold lower risk of death [CI.95% (0.16-0.85)]. Patients with PSA response had 0.38-fold lower risk of death [CI.95% (0.19-0.77)].

Side effects of any grade were observed in 32 patients (47.8%), including fatigue in 28 (41.8%), arthralgia in 21

(31.3%), weight loss in 11 (16.4%), and cerebrovascular event in 2 (3%). No serious adverse events were noted that required discontinuation of treatment except for the cerebrovascular events (one patient with a subdural hematoma and one with encephalopathy owing to hypertension). No significant intergroup difference was observed regarding side effect frequency (Table I).

DISCUSSION

In this study, the efficacy and safety of enzalutamide in mCRPC before and after docetaxel was evaluated. Although the patients with poor performance score, older age and higher comorbidities given first-line enzalutamide, it was effective and tolerable treatment both in the first-line and in the second-line treatment of mCRPC.

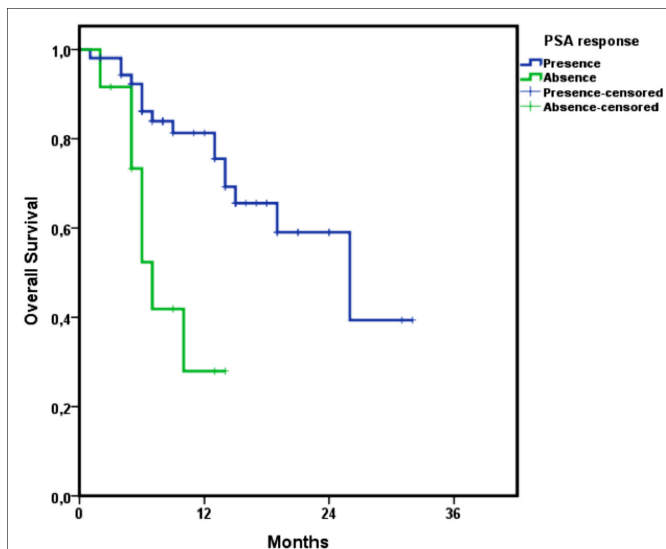


Figure 1: Overall survival Kaplan-Meier curve according to PSA response.

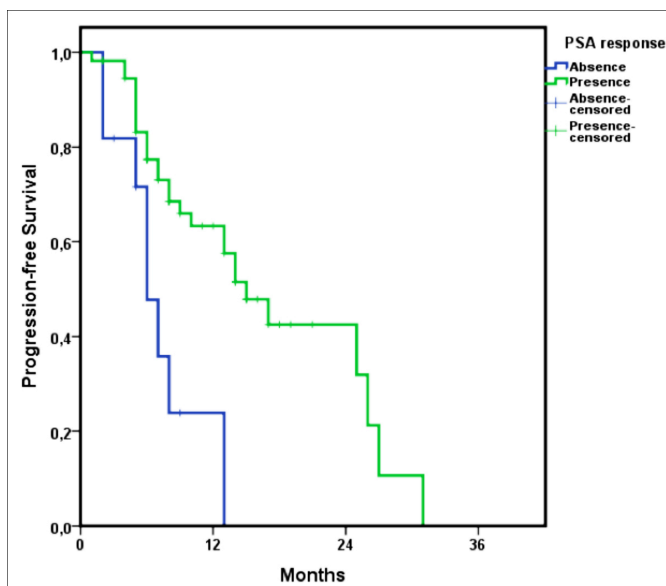


Figure 2: Progression-free survival Kaplan-Meier curve, according to PSA response.

This study determined a significantly higher OS and PFS in patients with PSA response. Moreover, higher than 9 months enzalutamide treatment duration was noted to decrease the risk of death. On the other hand, performance score ≥ 1 (compared to ECOG PS 0), absence of PSA response and radiological response were determined to affect the survival adversely; notably, in patients with PSA and radiological response decreases the risk of progression.

In the present study, the PSA levels were observed to decrease significantly in all groups. PSA response was observed in 55 patients, 22 (78.6%) of the BD group, and 33 (84.6%) of the AD group. In the pivotal phase III PREVAIL study that used enzalutamide before chemotherapy form CRPC, PSA response was observed in 78% of patients, similar to the results of the present study.¹⁸ In another

pivotal phase III AFFIRM study that used enzalutamide after chemotherapy for mCRPC, 54% of patients had PSA response; whereas, this rate was 84.6% in the AD group in the current study.¹⁹ Upon examining the other studies in the literature that evaluated the effectiveness of enzalutamide treatment, PSA response rates in chemotherapy-naïve patients were noted to vary between 43.2%–74.0%;^{20–22} whereas, this ratio was approximately 25.4%–32.0% in docetaxel-pretreated patients.^{20, 21} The reason for the considerably high PSA response rates in the AD group of current study compared with the literature could be because of the small and heterogeneous study group that was selected retrospectively. Moreover, the BD group was treated with enzalutamide because of their poor performance score (unsuitability for first-line docetaxel chemotherapy) and had more comorbidities compared with the AD group.

In Turkey, post-docetaxel enzalutamide treatment for mCRPC is reimbursed. Moreover, enzalutamide is administered to patients who cannot tolerate docetaxel (older age, poor ECOG PS) with the off-label approval of the Ministry of Health. According to the current study, the median OS in the BD group was 14 months, and that in the AD group was 26 months, with a no significant intergroup difference. Furthermore, longer enzalutamide treatments decreased the risk of death. In the PREVAIL study, the median OS with enzalutamide and placebo was 32.4 months and 30.2 months, respectively. Notably, enzalutamide provided a 29% reduction in the risk of death compared with placebo.¹⁸ The effect on OS might have been less than anticipated in current study because patients in the BD group were older and fragile, with a poor performance score. Nevertheless, three of the current study patients treated with enzalutamide as first-line owing to their poor performance scores were able to tolerate docetaxel treatment during progression.

The AFFIRM study revealed that enzalutamide significantly improved the median OS compared with placebo (18.4 vs. 13.6 months, HR 0.63, $p < 0.001$).¹⁹ A prospective study on enzalutamide observed that the OS of the BD group was significantly longer than that of the AD group ($p = 0.004$).²⁰ Another retrospective study reported a median OS of 16.2 months for the BD group and 11.6 months for the AD group with enzalutamide treatment ($p = 0.003$).²¹ Some studies have observed a trend of longer OS in patients with enzalutamide treatment before chemotherapy.²² However, results of the present study seem to be contradictory concerning the OS. Nevertheless, this contradiction could be explained, based on ethnic differences and patient characteristics (such as age and performance scores) of the study population.

The AFFIRM and PREVAIL studies determined that enzalutamide significantly increased the PFS compared with placebo.¹⁹ However, the literature lacks enough studies regarding the effect of enzalutamide, both BD and AD, on the PFS. In the present study, the median PFS was numerically

longer in the AD group (14 months) than the BD group (13 months), *albeit* with a negligible intergroup difference ($p = 0.851$). According to a multivariate analysis, PFS was significantly longer in patients with PSA response. Real-life data from Japan revealed that the median PFS was 12.9 months in the BD group and 7.3 months in the AD group, with a nonsignificant difference.²⁰ The results of multivariate analysis from the same study revealed that an early PSA response of 50% was an independent predictor of better PFS.²⁰ On the other hand, another study revealed that the effect of enzalutamide treatment on PFS was significantly higher in the BD group than in the AD group.²¹ In the present study if BD group was of younger age, good ECOG PS and had low comorbidities, the OS and PFS results would be better.

Approximately half of the current study patients (47.8%) had side effects of any grade, including fatigue ($n=28$, 41.8%) and cerebrovascular event ($n=2$, 3%). In the PREVAIL study, 97% of patients had side effects of any grade, with the most common being fatigue (in 36%), similar to the current study. Notably, the side effects of an acute coronary syndrome (1%) and cerebrovascular event (1%) were relatively low.¹⁸ In the AFFIRM study, 34% of patients developed fatigue; whereas, 3% of patients developed side effects that caused death.¹⁹ The mismatch between the literature and the current results concerning side effect profiles might be because of the retrospective nature of this study.

Nonetheless, this study had some limitations. First, this study was conducted retrospectively with a relatively low number of patients. Second, the characteristics of treatment groups were heterogeneous. This heterogeneity was mainly because of the unavoidable fact that patients receiving enzalutamide as first-line treatment were those who were unable to tolerate chemotherapy, in parallel to Turkey's confirmations of the medicine.

Notably, in Turkey, enzalutamide is administered as a first-line treatment for mCRPC only in patients who cannot tolerate docetaxel. The present study is crucial because it provides real-world data reflecting the safety and reliability of enzalutamide in Turkey. Nevertheless, multicenter prospective studies are needed to analyse the sequencing of treatment form CRPC considering all the available treatment options.

CONCLUSION

This study revealed that enzalutamide is effective and safe for mCRPC, based on the real-world experience of both docetaxel-naïve fragile patients and docetaxel-pretreated patients. PSA response, radiological response and duration of enzalutamide treatment may predict the improvement of survival.

ETHICAL APPROVAL:

Ethics Committee approval was received from the Ethics Committee of University of Health Sciences, Dr. Abdur-

rahman Yurtaslan Oncology Training and Research Hospital (Number: E-75-30.07.2019).

PATIENTS' CONSENT:

Informed consents were obtained from all participants or their family, included in the study.

CONFLICT OF INTEREST:

Authors declared no conflict of interest.

AUTHORS' CONTRIBUTION:

IB: Conception and design, analysis and interpretation of data, drafting of the manuscript.

FBB: Analysis and interpretation of data.

HYC: Acquisition of data.

EE: Analysis and interpretation of data.

OB: Advices and final approval.

UD: Conception and design, reviewed the paper, and final approval.

REFERENCES

1. Attard G, Parker C, Eeles RA, Schröder F, Tomlins SA, Tannock I, *et al.* Prostate cancer. *Lancet* 2016; **387**:70-82.
2. Siegel RL, Miller KD, Jemal A. Cancer statistics, 2018. *CA Cancer J Clin* 2018; **68**:7-30.
3. Grossmann M, Cheung AS, Zajac JD. Androgens and prostate cancer; pathogenesis and deprivation therapy. *Best Pract Res Clin Endocrinol Metab* 2013; **27**(4):603-16. doi: 10.1016/j.beem.2013.05.001.
4. Imamoglu GI, Tulay E, Ozdemir NY, Karacin C, Cimen S, Cilbir E, *et al.* Do patient characteristics and duration of response to hormonal therapy predict outcomes of post-docetaxel abiraterone acetate treatment in prostate cancer? *UHOD*. 2019; **29**(3):001-8.
5. Sharifi N, Gulley JL, Dahut WL. Androgen deprivation therapy for prostate cancer. *JAMA* 2005; **294**(2):238-44. doi:10.1001/jama.294.2.238.
6. Scher HI, Halabi S, Tannock I, Morris M, Sternberg CN, Carducci MA, *et al.* Design and end points of clinical trials for patients with progressive prostate cancer and castrate levels of testosterone: Recommendations of the prostate cancer clinical trials working group. *J Clin Oncol* 2008; **26**(7):1148-59. doi: 10.1200/JCO.2007.12.4487.
7. Beaver JA, Kluetz PG, Pazdur R. Metastasis-free survival - a new end point in prostate cancer trials. *N Engl J Med* 2018; **378**(26):2458-60. doi: 10.1056/NEJMp1805966
8. Lortot Y, Miller K, Sternberg CN, Fizazi K, De Bono JS, Chowdhury S, *et al.* Effect of enzalutamide on health-related quality of life, pain, and skeletal-related events in asymptomatic and minimally symptomatic, chemotherapy-naïve patients with metastatic castration-resistant prostate cancer (PREVAIL): Results from a randomised, phase 3 trial. *Lancet Oncol* 2015; **16**(5):509-21. doi: 10.1016/S1470-2045(15)70113-0
9. Teo MY, Rathkopf DE, Kantoff P. Treatment of advanced prostate cancer. *Annu Rev Med* 2019; **70**:479-99. doi: 10.1146/annurev-med-051517-011947.

10. de Bono JS, Oudard S, Ozguroglu M, Hansen S, Machiels JP, Kocak I, *et al.* Prednisone plus cabazitaxel or mitoxantrone for metastatic castration-resistant prostate cancer progressing after docetaxel treatment: A randomised open-label trial. *Lancet* 2010; **376(9747)**:1147-54. doi: 10.1016/S0140-6736(10)61389-X.
11. Knudsen KE, Scher HI. Starving the addiction: New opportunities for durable suppression of AR signaling in prostate cancer. *Clin Cancer Res* 2009; **15(15)**:4792-8. doi: 10.1158/1078-0432.CCR-08-2660
12. Montgomery RB, Mostaghel EA, Vessella R, Hess DL, Kalhorn TF, Higano CS, *et al.* Maintenance of intratumoral androgens in metastatic prostate cancer: A mechanism for castration-resistant tumor growth. *Cancer Res* 2008; **68(11)**:4447-54. doi: 10.1158/0008-5472.CAN-08-0249
13. Schalken J, Fitzpatrick JM. Enzalutamide: Targeting the androgen signalling pathway in metastatic castration-resistant prostate cancer. *BJU Int* 2016; **117(2)**:215-25. doi: 10.1111/bju.13123.
14. Dai C, Heemers H, Sharifi N. Androgen signaling in prostate cancer. *Cold Spring Harb Perspect Med* 2017; **7**:a030452.
15. Ryan CJ, Smith MR, Fizazi K, Saad F, Mulders PF, Sternberg CN, *et al.* Abiraterone acetate plus prednisone versus placebo plus prednisone in chemotherapy-naïve men with metastatic castration-resistant prostate cancer (COU-AA-302): Final overall survival analysis of a randomised, double-blind, placebo-controlled phase 3 study. *Lancet Oncol* 2015; **16(2)**:152-60. doi: 10.1016/S1470-2045(14)71205-7.
16. Van Soest RJ, van Royen ME, de Morree ES, Moll JM, Teubel W, Wiemer EA, *et al.* Cross-resistance between taxanes and new hormonal agents abiraterone and enzalutamide may affect drug sequence choices in metastatic castration-resistant prostate cancer. *Eur J Cancer* 2013; **49(18)**: 3821-30. doi: 10.1016/j.ejca.2013.09.026.
17. Sanford M. Enzalutamide: A review of its use in metastatic, castration-resistant prostate cancer. *Drugs* 2013; **73(15)**:1723-32. doi: 10.1007/s40265-013-0129-9.
18. Beer TM, Armstrong AJ, Rathkopf DE, Loriot Y, Sternberg CN, Higano CS, *et al.* Enzalutamide in metastatic prostate cancer before chemotherapy. *N Engl J Med* 2014; **371(5)**:424-33. doi: 10.1056/NEJMoa1405095.
19. Scher HI, Fizazi K, Saad F, Taplin ME, Sternberg CN, Miller K, *et al.* Increased survival with enzalutamide in prostate cancer after chemotherapy. *N Engl J Med* 2012; **367(13)**: 1187-97. doi: 10.1056/NEJMoa1207506.
20. Kato H, Furuya Y, Miyazawa Y, Miyao T, Syuto T, Nomura M, *et al.* Consequences of an early PSA response to enzalutamide treatment for Japanese patients with metastatic castration-resistant prostate cancer. *Anticancer Res* 2016; **36(11)**:6141-9. doi: 10.21873/anticancer.11205.
21. Nadal R, Zhang Z, Rahman H, Schweizer MT, Denmeade SR, Paller CJ, *et al.* Clinical activity of enzalutamide in docetaxel-naïve and docetaxel-pretreated patients with metastatic castration-resistant prostate cancer. *Prostate* 2014; **74(15)**:1560-8. doi: 10.1002/pros.22874.
22. Jung SI, Kim MS, Jeong CW, Kwak C, Hong SK, Kang SH, *et al.* Enzalutamide in chemotherapy-naïve patients with metastatic castration-resistant prostate cancer: A retrospective Korean multicohort study in a real-world setting. *Investig Clin Urol* 2020; **61**: 19-27.

• • • • •